



Marine Dept.



Hydrographic Dept.



Port Authority of Thailand

# National Sea Level Observation and Sea Level Activities in Thailand

Cdr. Supasit Kongdee

anographic and Tidal Section, Oceanographic Division

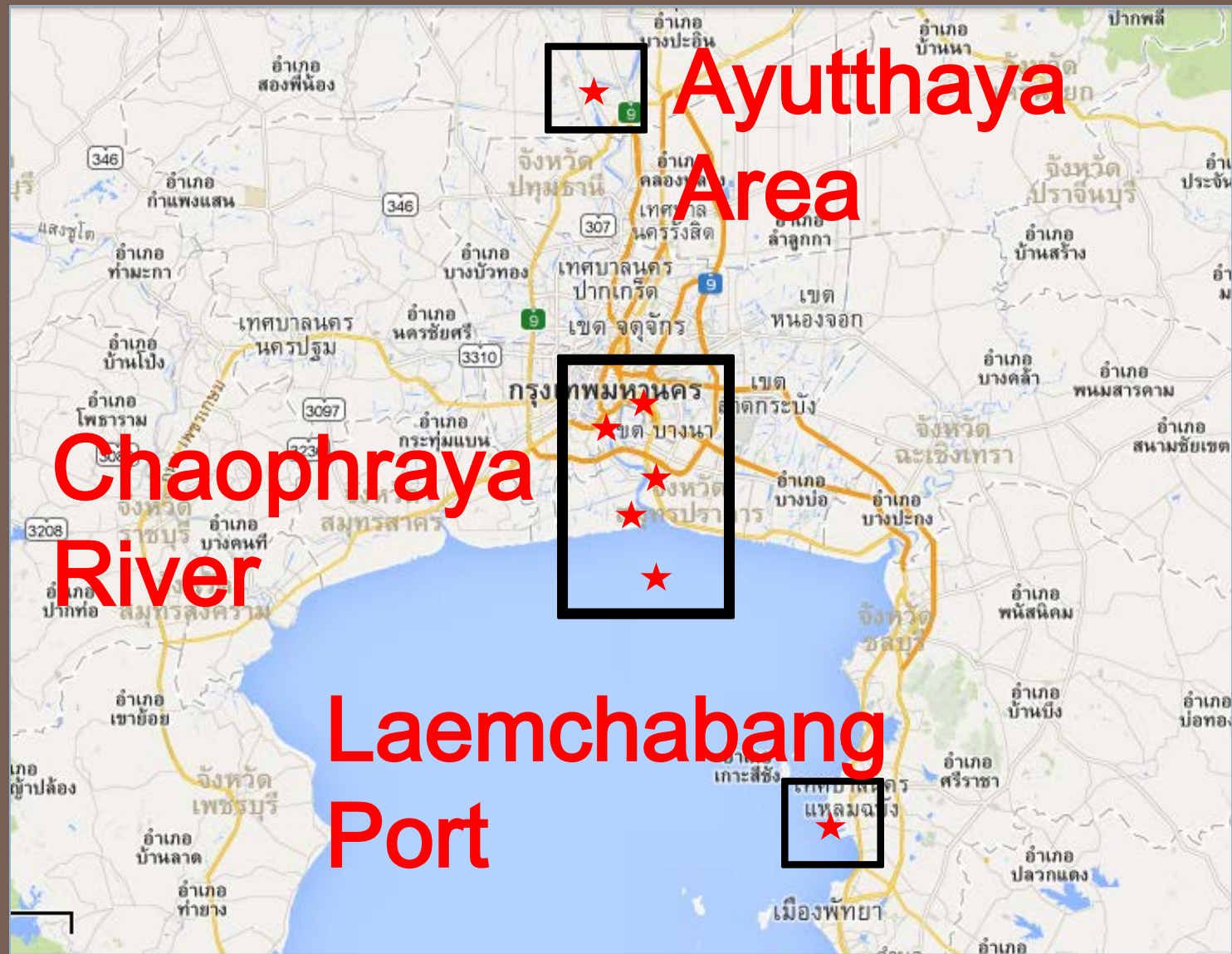
27/03/57

National Sea Level Observation and Sea Level Activities in Thailand

# OUTLINE

- Map of tide gauge network in Thailand
- List of gauge sites
- The gauge technology employed in the network
- Sea level products
- sea level science studies
- tidal analysis package
- addresses of data banks
- Tsunami warning system

# Map of tide gauge network in Thailand



27/03/57

National Sea Level Observation and Sea Level Activities in Thailand

# List of gauge sites (PAT)

## Present

No	Station	Manual	Auto	Remark
1	Bang Sai	X	X	Pressure Sensor
2	Bangkok Port	X	X	Pressure Sensor
3	Pra Pradaeng		X	Ultrasonic
4	Samutprakan	X		Under Construction
5	Phrachunlachomklao Fort	X		Under Construction
6	Beacon J	X		Under Construction
7	Laemchabang Port	X	X	Ultrasonic

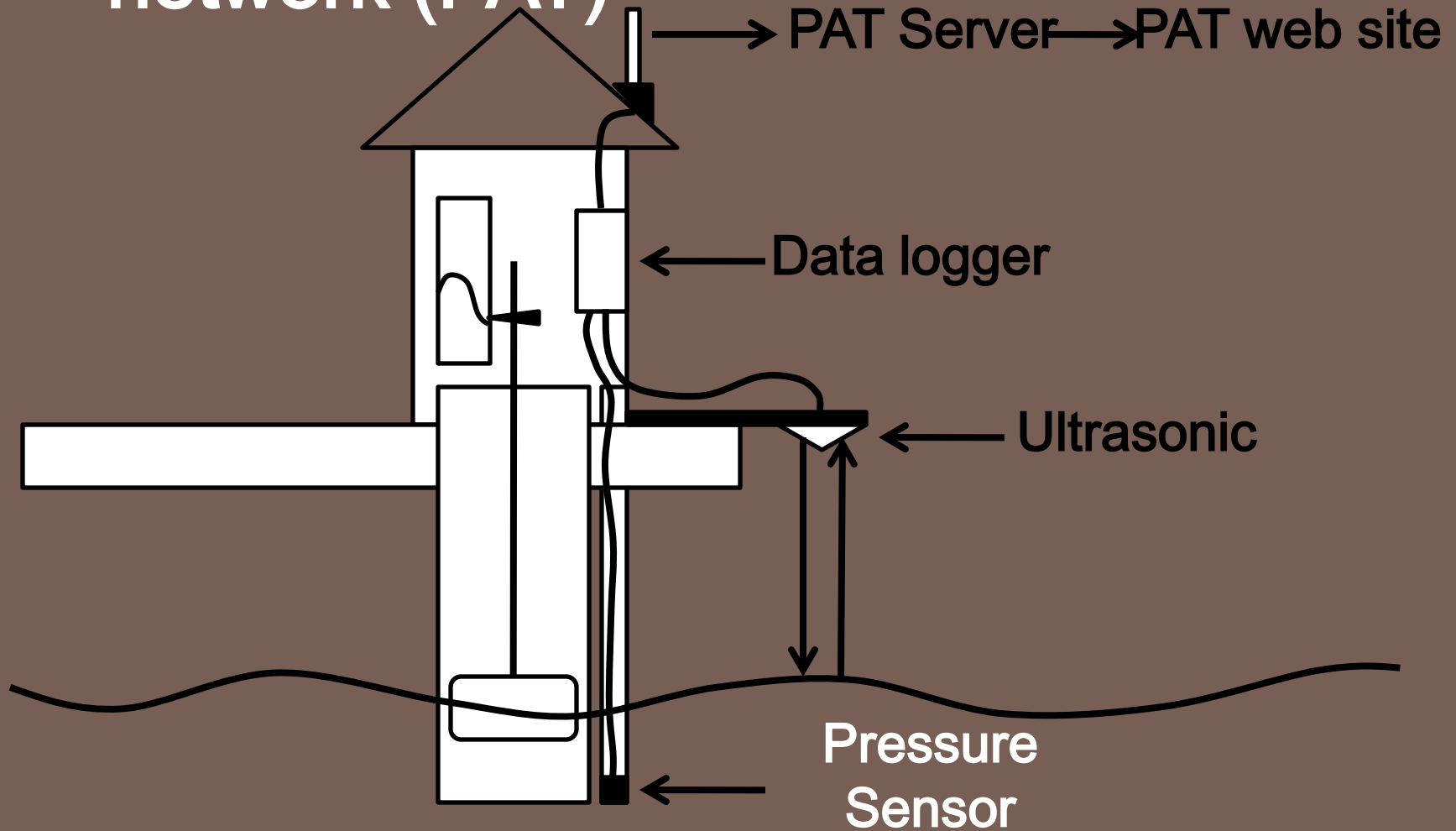
# List of gauge sites (PAT)

In 2015

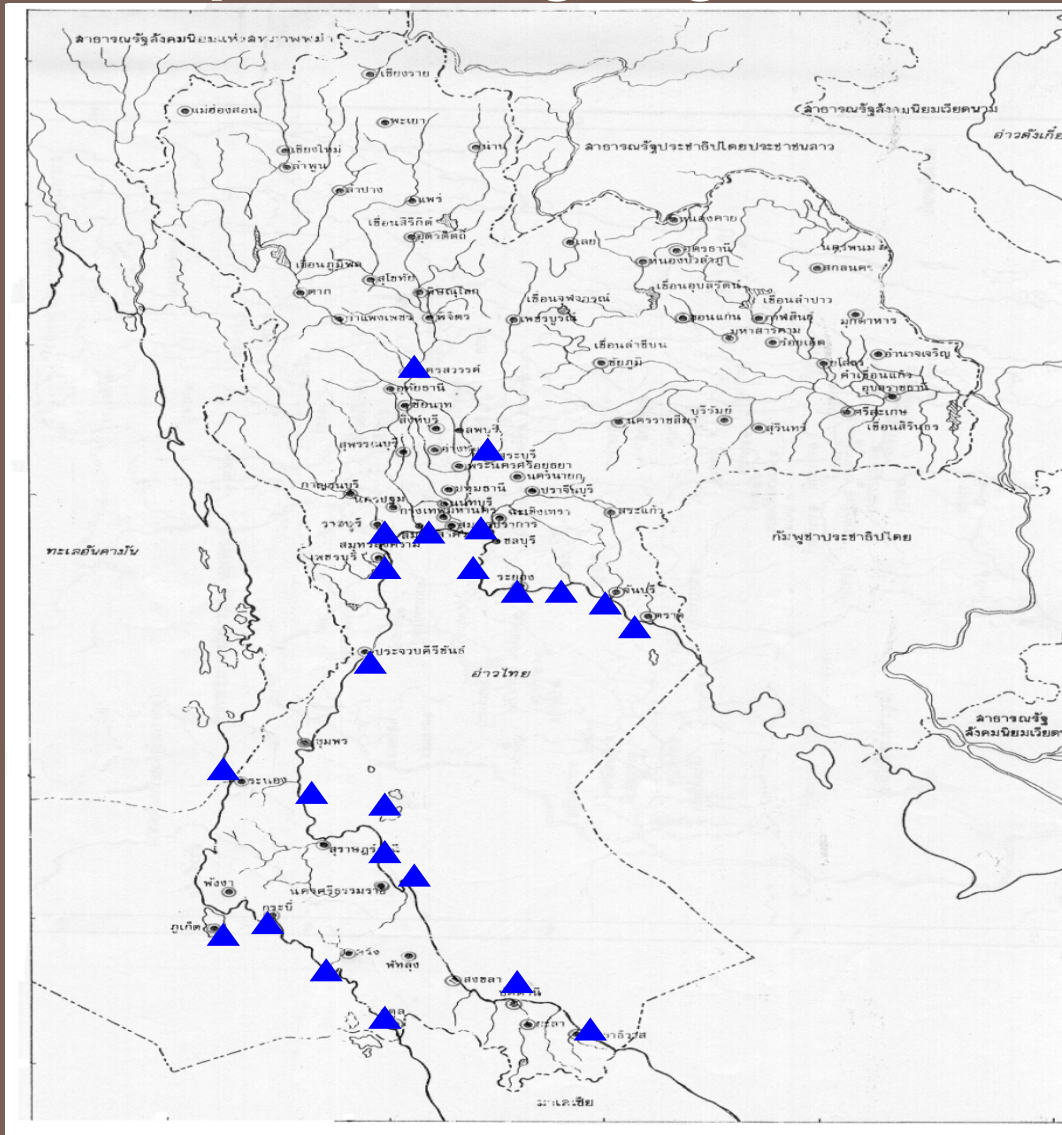
No	Station	Man ual	Auto	Remark
1	Bang Sai	X	X	Pressure Sensor
2	Bangkok Port	X	X	Pressure Sensor
3	Pra Pradaeng		X	Ultrasonic
4	Samutprakan	X	X	Ultrasonic
5	Phrachunlachomkl ao Fort	X	X	Ultrasonic
6	Beacon J	X	X	Ultrasonic
7	Laemchabang Port	X	X	Ultrasonic

27/03/57

# The gauge technology employed in the network (PAT)



# Map of tide gauge network in Thailand (M



23 stations  
All are float tide gauge

27/03/57

National Sea Level Observation and Sea Level Activities in Thailand

# List of gauge sites (MD)

Station name	Lat.	Long.	Location	Observation
<b>Upcountry</b>				
Nakhonsawan (KW)	15° 41' 19"	100° 07' 42"	Mae Nam Chaopraya, Nakhonsawan-ook Sub-district, Mueang District, Nakhonsawan Province	Since 1996 - Present
Nakornluang (NK)	14° 28' 04"	100° 07' 54"	Mae Nam Pasak, Nakhonluang Sub-district, Nakhonluang District,	Since 1997 - Present



# List of gauge sites (MD), East coast of

Station name	Lat.	Long.	Location	Observation
Bangpakong (BK)	13° 29' 06"	101° 00' 11"	Mae Nam Bangpakong, Thephasdin Bridge, Thakam Sub-district, Bangpakong District, Chachoengsao Province	Since 1981 - Present
Ao Udom (AU)	13° 07' 31"	100° 53' 34"	Multipurpose Port, thungsukha Sub-district, Sri racha District, Chonburi Province	Since 2006 - Present
Rayong (RY)	12° 39' 36"	101° 16' 15"	Paknam Rayong Sub-district, Mueang District, Rayong Province	Since 1986 - Present
Prasae (PS)	12° 41' 47"	101° 42' 09"	Paknam Prasae Sub-district, Klaeng District, Rayong Province	Since 1977 - Present
Thachalaep (TL)	12° 32' 00"	102° 03' 28"	Thachalap Pier, Bangkaja Sub-district, Mueang District	Since 1981 - Present

## List of gauge sites (MD), West Coast of GOT

Samutsakorn (TC)	13° 30' 42"	100° 16' 28"	Mae Nam Thachin, Wat Srisutharam, Mueang District, Samutsakhon Province	Since 1977 - Present
Samutsongkram (MK)	13° 22' 42"	99° 59' 32"	Mae Nam Maeklong Wat Radsatratham, Bangjakreng Sub-district, Mueang District, Samutsongkhram Province	Since 1977 - Present
Banlaem (BL)	13° 15' 53"	99° 56' 32"	Klong Bangtaboon, Bangtaboon-ook Sub-district, Banlaem District, Phetchaburi Province	Since 1996 - Present
Klongwan (KV)	11° 44' 02"	99° 46' 56"	Pier, Klongwan Sub-district Mueang District, Prachuap kirikhan Province	Since 2006 - Present
Langsuan (LS)	9° 56' 45"	99° 09' 27"	Pier, Paknam Langsuan Sub-district, Langsuan District, Chumphon Province	Since 1982 - Present
Ko Samui (SA)	9° 32' 17"	99° 55' 51"	Ferry Port 2, Ko Samui Sub-district, Ko Samui District, Suratthani Province	Since 2006 - Present

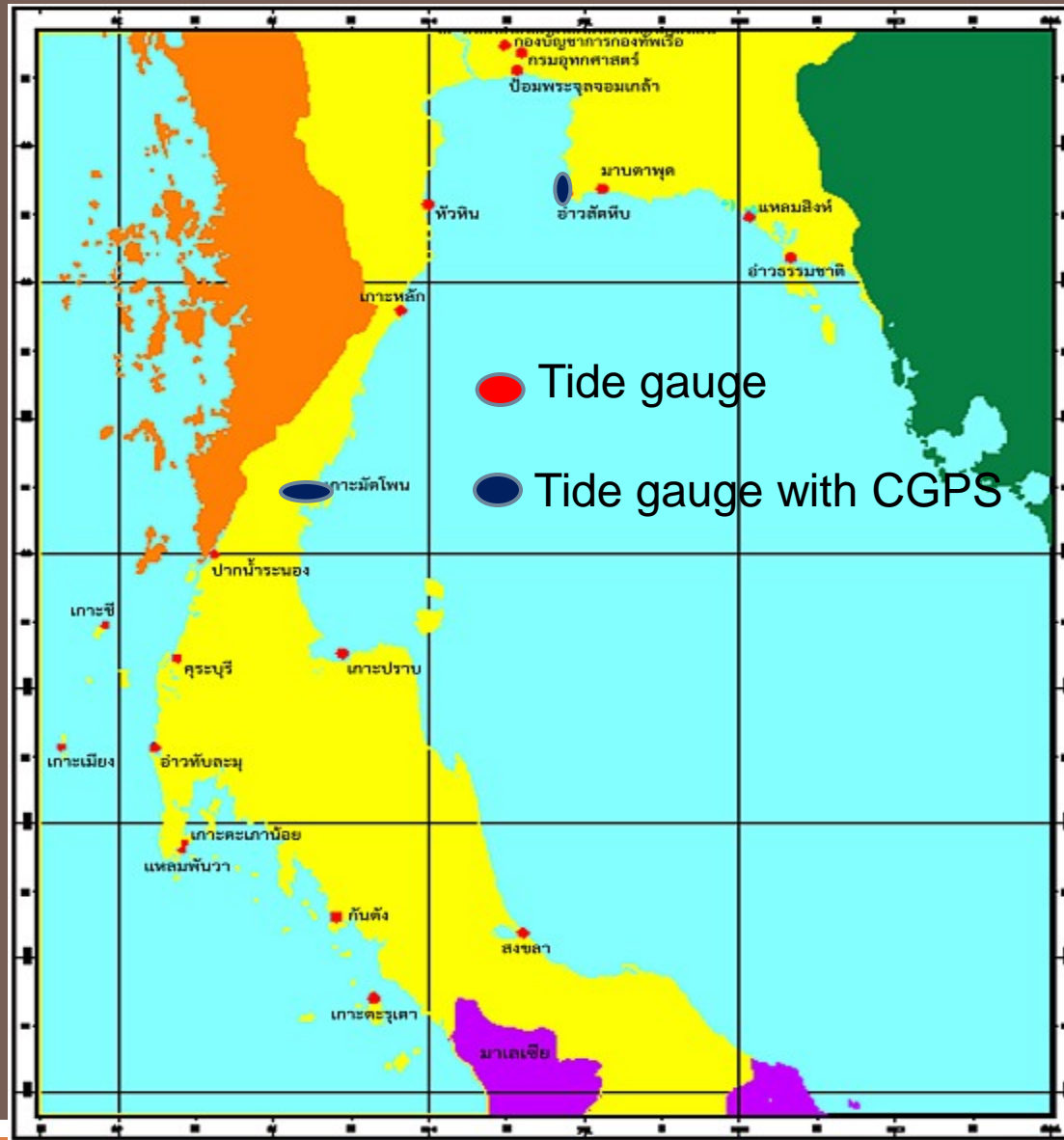
# List of gauge sites (MD), Andaman

Station name	Lat.	Long.	Location	Observation
Ranong (RN)	10° 00' 17"	98° 36' 24"	Multipurpose Port, Paknam Sub-district	Since 2008 – Present
	09° 57' 03"	98° 35' 45"	Mueang District, Ranong Province Ko Kontee	1977 – 2007
Ao Po (AP)	8° 03' 34"	98° 26' 10"	Ao po Port, Pakhlok Sub-district Thalang District, Phuket Province	Since 2006 - Present
Krabi (KB)	8° 02' 46"	98° 54' 21"	Krabi Port, klongjilad Sub-district, Mueang District, Krabi Province	Since 1981- Present
Kangtang (KT)	7° 18' 40"	99° 24' 08"	Chao-mai Port, Libong Sub-district, Kantang District,	Since 2007 - Present
	07° 24' 38"	99° 30' 43"	Channel Development and Maintenance Centre3 (Trang)	1968-1992, 1998-2006
T...	08° 00' 00"	100° 04'	T...	Since 1994

# The gauge technology employed in the network (MD)



# Map of tide gauge network in Thailand (HL)



27/03/57

National Sea Level Observation and Sea Level Activities in Thailand

# List of gauge sites (HD)

Station Name	LAT	LONG	Observation Periods
1.Royal Thai Navy Headquarters	13-42-00	100-35-02	1945
2.Phra Chunlachomklao Fort (Samut Prakan)	13-33-06	100-34-44	1985
3.Ao Sattahip (Chon Buri)	12-38-42	100-52-55	1940
4.Laem Sing (Chanthaburi)	12-28-27	102-03-45	1960
5.Hua Hin (Prachuap Khiri Khan)	12-34-22	99-57-48	1992

# List of gauge sites (HD)

Station Name	LAT	LONG	Observation Periods
6.Ko Lak (Prachuap Khiri Khan)	11-47-42	99-48-58	1939
7.Ko Mattaphon (Chumphon)	10-26-40	99-15-25	1954
8.Ko Prap (Surat Thani)	09-15-47	99-26-18	1977
9.Songkhla ( Songkhla )	09-15-48	100-34-50	1986
10.Pak Nam Ranong (Ranong)	07-12-58.	98-35-15	2007
11Khura Buri (Phangnga)	09-13-30	98-22-37	2007

27/03/57

# List of gauge sites (HD)

Station Name	LAT	LONG	Observation Periods
12.Ao Thap Lamu (Phangnga)	08-34-26	98-13-29	1986
13.Ko Thaphao Noi (Phuket)	07-49-54	98-25-30	1948
14.Ko Tarutao (Satun)	06-42-06	99-39-00	1986
15.Laem Ngop (Trat)	12-10-07.	102-23-45	2007
16.Pak Nam Trang (Trang)	07-24-13	99-30-45	2007



# List of gauge sites (HD)

Station Name	LAT	LONG	Observation Periods
16.Mabtaprt Port	12-40-21.	101-08-20.	2003
17.Ko miang	08-34-16	97-38-23.	2005
18. Ko Stork	09-28-28	97-54-12	2005
19.Panwa cape	07-48-09	98-24-38	2012
15.hydrographic dept	13-40-20	100-35-22	2012

# The gauge technology employed in the

n



27/03/57

National Sea Level Observation and Sea Level Activities in Thailand

# Sea level products

28 stations for Tide Table



27/03/57

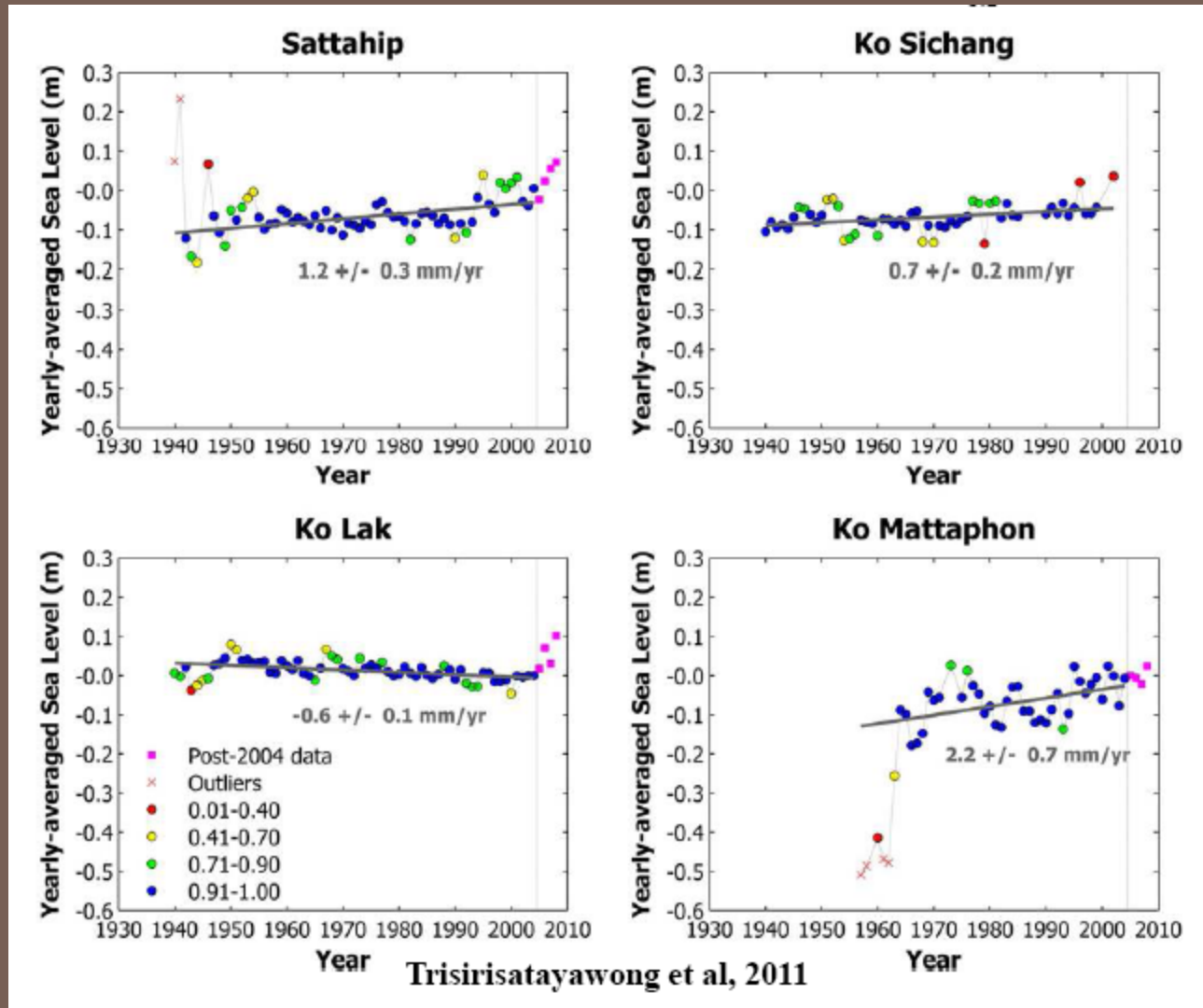
National Sea Level Observation and Sea Level Activities in Thailand

# Sea level products

KO THAPAO NOI (PHUKET)				
พ.ศ. 2528 - 2548 (ค.ศ. 1985 - 2005)				
Non - Harmonic Tidal Quantities				
ละติจูด (Lat.) 07° - 49' - 55" น.(N.)		ลองจิจูด (Long.) 98° - 25' - 30" อ.(E.)		
TIDAL INFORMATION	ชื่อย่อ	ค่าเฉลี่ย (เมตร)		ค่ารายการน้ำ (เมตร)
		จากศูนย์บรรทัดน้ำ	จาก M.S.L.	
MEAN HIGHER HIGH WATER	MHHW			
MEAN HIGH WATER SPRING	MHWS	3.42	0.92	3.21
MEAN HIGH WATER	MHW	3.04	0.54	
MEAN HIGH WATER NEAP	MHWN	2.68	0.18	2.47
MEAN LOWER HIGH WATER	MLHW			
LOCAL MEAN SEA LEVEL	LMSL	2.20	-0.30	
MEAN TIDE LEVEL	MTL	2.19	-0.31	
MEAN HIGHER LOW WATER	MHLW			
MEAN LOW WATER NEAP	MLWN	1.72	-0.78	1.51
MEAN LOW WATER	MLW	1.33	-1.17	
MEAN LOW WATER SPRING	MLWS	0.99	-1.51	0.78
MEAN LOWER LOW WATER	MLLW			
MEAN SPRING RANGE (Mn.Sg.Range)				2.43
MEAN NEAP RANGE (Mn.Np.Range)				0.96
MEAN RANGE (Mn.Range)				1.71
HIGHEST HIGH WATER	H'est HW.	4.22	1.72	ก.ย.2491
LOWEST LOW WATER	L'est LW.	0.21	-2.29	ก.ย.2495

28 stations for Tidal Information

# sea level science studies



# Sea level science studies

Long-term absolute rates of sea level rise at four tide gauges in the Gulf of Thailand. The vertical land motions at these tidal stations are derived from a) campaign GPS data at CHON, b) campaign GPS data at BANH, and c) difference of sea level change rates detected by satellite altimetry and tidal data (see Section 5.4).

Tidal stations	Apparent SLR rates (mm/yr)	Vertical land motions (mm/yr)	Absolute SLR rates (mm/yr)
Sattahip (1940–2004)	$1.2 \pm 0.3$	$3.8 \pm 1.3^a$	$5.0 \pm 1.3$
Ko Sichang (1940–1999)	$0.7 \pm 0.2$	$3.8 \pm 1.3^a$	$4.5 \pm 1.3$
Ko Lak (1940–2004)	$-0.6 \pm 0.1$	$3.6 \pm 1.5^b$	$3.0 \pm 1.5$
Ko Mattaphon (1964–2004)	$2.2 \pm 0.7$	$2.2 \pm 0.8^c$	$4.4 \pm 1.1$

# Tidal analysis package

PAT's software developed by EGAT

(EGAT = Electricity Generating Authority of Thailand)

HD have used software package developed by Flinders University

# addresses of data banks



การทำเรือแห่งประเทศไทย  
Port Authority of Thailand

PROUD to be PAT

หน้าหลัก ข่าว **ผลิตภัณฑ์** e-Port ข้อมูลการทำเรือ โครงสร้างไซส์ บริการ ติดต่อการทำเรือ

E-Service for Vessel Cargo Management System

การบริหารความพร้อมต่อสภาวะวิกฤต การทำเรือแห่งประเทศไทย  
ข่าวประกาศราคาด้วยวิธีการอิเล็กทรอนิกส์  
ผลการจัดซื้อ-จัดจ้าง  
รวมถึงค้นหาสนใจต่างๆ

for Vessel Cargo Management System การยื่นใบคำขอใช้บริการเรือ เช่นเครื่องมือทุ่นแรง การตรวจสอบสถานะใบคำร้อง การตรวจสอบสถานะสินค้าเข้าและสินค้าที่เตรียม การชำระค่าบริการเงินเชื่อ ของท่าเรือกรุงเทพ



ข้อมูลระดับน้ำ

สถานีท่าเรือกรุงเทพฯ สถานีพระประแดง สถานีบางไทร สถานีท่าเรือแหลมฉบัง

Ship News

ประกาศเปิดเมฆราคากลาง

4 Stations, Bangkok Port, Pra Pradaeng, Bang Sai, and Laemchabang Port are available at [WWW.PORT.CO.TH](http://WWW.PORT.CO.TH)



# addresses of data banks

กรมอุทกศาสตร์

หน้าแรก เกี่ยวกับ อ.ส. ผู้บังคับบัญชา ประกาศจัดซื้อจัดจ้าง วารสาร อ.ส. จดหมายอิเล็กทรอนิกส์

กรมอุทกศาสตร์

- ประวัติกรมอุทกศาสตร์
- วัตถุประสงค์ภารกิจ
- การจัดตั้งหน่วย
- ผู้บังคับบัญชา
- หมายและใบรหัสนี้
- แผนที่ใต้น้ำกรมอุทกศาสตร์

กรมอุทกศาสตร์ กองทัพเรือ

ระดับน้ำในแม่น้ำเจ้าพระยา หน้ากองบัญชาการกองทัพเรือ

Water Level MSL (m) 24 Hours (Backward)

Date / Time	Water Level_MSL(m)
13 / 09 / 2011 09:16 AM	1.39

Current Server Time 13/09/2011 09:19

หน้าแรก...กองบัญชาการ กรมอุทกศาสตร์ กองทัพเรือ  
222 ถนนรัชกาลบุรีท่าเรือ แขวงบางนา เขตบางนา กรุงเทพฯ 10260  
อีเมล : hydrodept@navy.mi.th  
หน้าเข้าชมเว็บไซต์นี้ล่าสุด 001178298

กรมอุทกศาสตร์ กองทัพเรือ

ระดับน้ำในแม่น้ำเจ้าพระยา หน้ากองบัญชาการกองทัพเรือ

Water Level MSL (m) 24 Hours (Backward)

Date / Time	Water Level_MSL(m)
13 / 09 / 2011 09:16 AM	1.39

Current Server Time 13/09/2011 09:19

[WWW.HYDRO.NAVY.MI.TH](http://www.hydro.navy.mi.th)

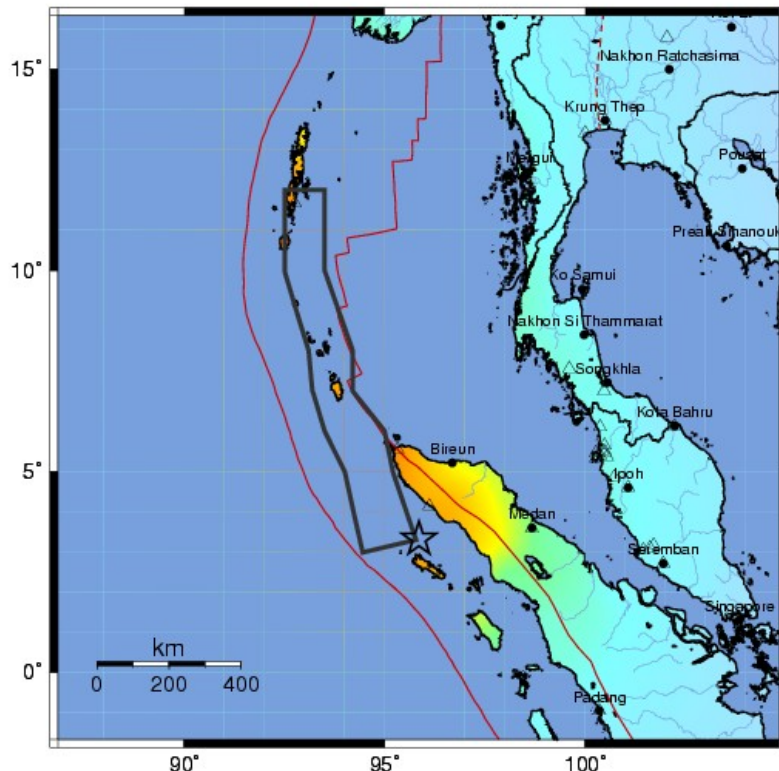
27/03/57

National Sea Level Observation and Sea Level Activities in Thailand

# Hydrographic Department Royal Thai Navy

## 26 December 2004 India Ocean Tsunami

USGS ShakeMap : 154 miles SSE of Banda Aceh, Sumatera, Indonesia  
 Sun Dec 26, 2004 12:58:53 AM GMT M 9.0 N3.32 E95.85 Depth: 30.0km ID:slav



Processed: Mon Apr 4, 2005 12:04:01 PM PDT, -- NOT REVIEWED BY HUMAN

PERCEIVED SHAKING	Not felt	Weak	Light	Moderate	Strong	Very strong	Severe	Violent	Extreme
POTENTIAL DAMAGE	none	none	none	Very light	Light	Moderate	Moderate/Heavy	Heavy	Very Heavy
PEAK ACC.(%g)	<.17	.17-1.4	1.4-3.9	3.9-9.2	9.2-18	18-34	34-65	65-124	>124
PEAK VEL.(cm/s)	<0.1	0.1-1.1	1.1-3.4	3.4-8.1	8.1-16	16-31	31-60	60-116	>116
INSTRUMENTAL INTENSITY	I	II-III	IV	V	VI	VII	VIII	IX	X+

**07:57 26 December 2004**

**9.3 M Earthquake**

**Two hours later Tsunami hit west coast of Thailand**

**5,395 dead, 8,088 injured and 2,932 missing/unidentified**

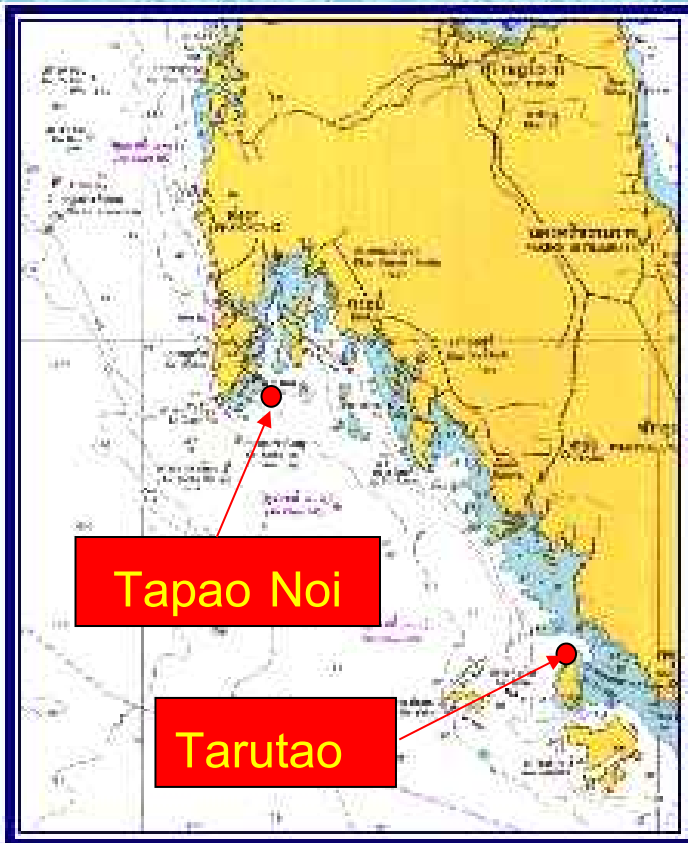
**Cost 2 Billion USD in 6 provinces**

# Hydrographic Department Royal Thai Navy

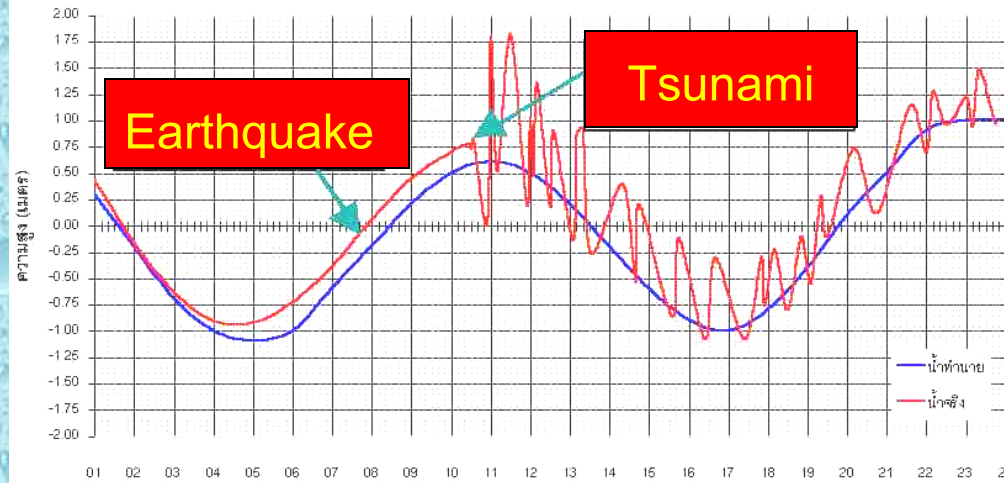




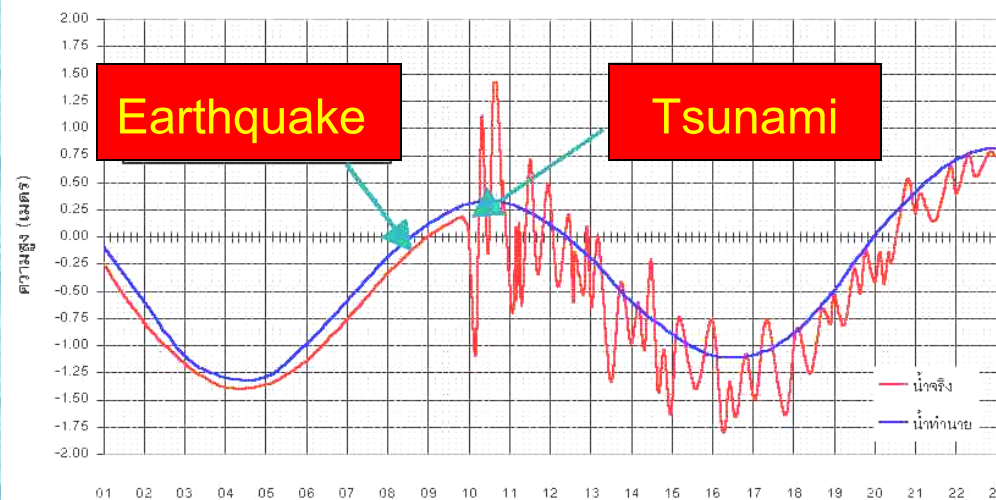
# Hydrographic Department Royal Thai Navy



## Tarutao



## Tapao Noi

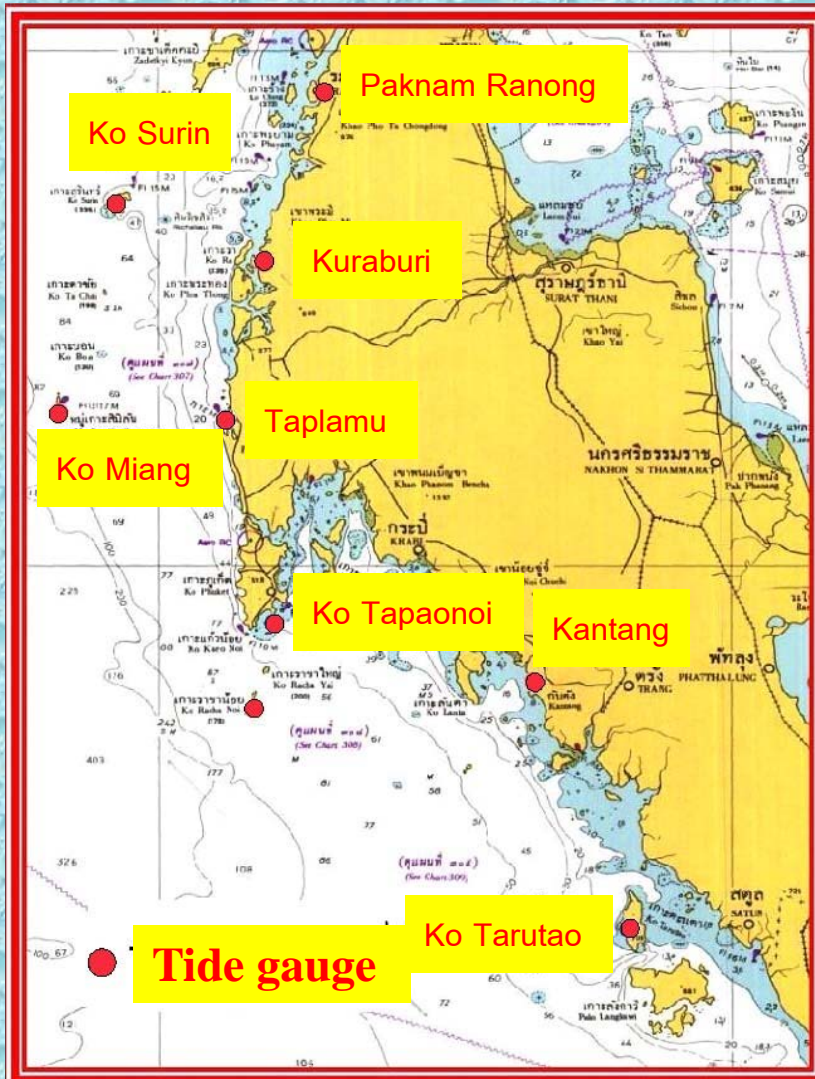


# Hydrographic Department Royal Thai Navy



# Hydrographic Department Royal Thai Navy

## Real-time Tide gauge Network



- Paknam Ranong
- Ko (Island) Surin
- Kuraburi
- Ao (Bay) Taplamu
- Ko Miang
- Ko Tarutao
- Ko Tapaonoi
- Ko Rachanoi
- Kantang

# Hydrographic Department, Royal Thai Navy

## TSUNAMI WARNING

Earthquake > 7

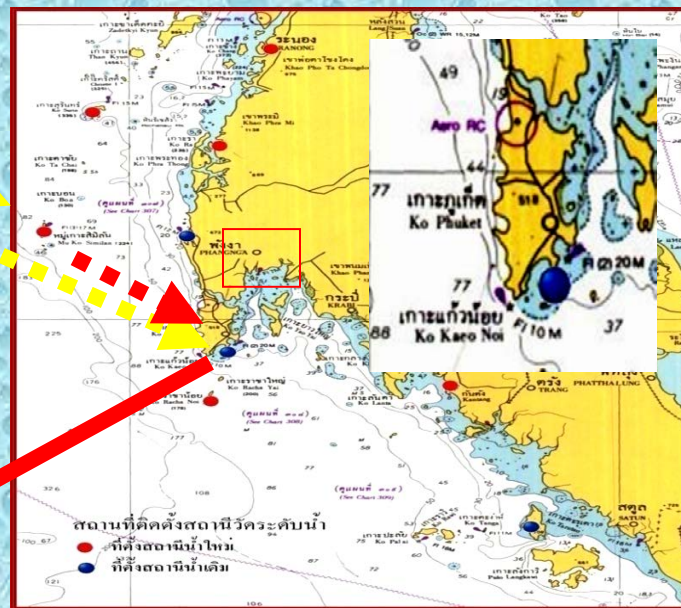


OP.Center  
RTN

OP.Center  
RTN HD

Alert tide gauge at Similan islands

If tsunami is highly likely : Alert



Andaman sea  
squadron and  
Pangnga naval  
base

# Hydrographic Department Royal Thai Navy







Marine Dept.



Hydrographic Dept.



Port Authority of Thailand

# THANK YOU